

E1 SJ-5076 E2 SJ-5076

E3 SJ-5076 E4 SJ-5076

E5 SJ-5076 E6 SJ-5076

TESTDOC1 A12-1000 DOC1 A12-0999

FIXTURE1 A13-0114 TEST1 A11-0298


LABEL1

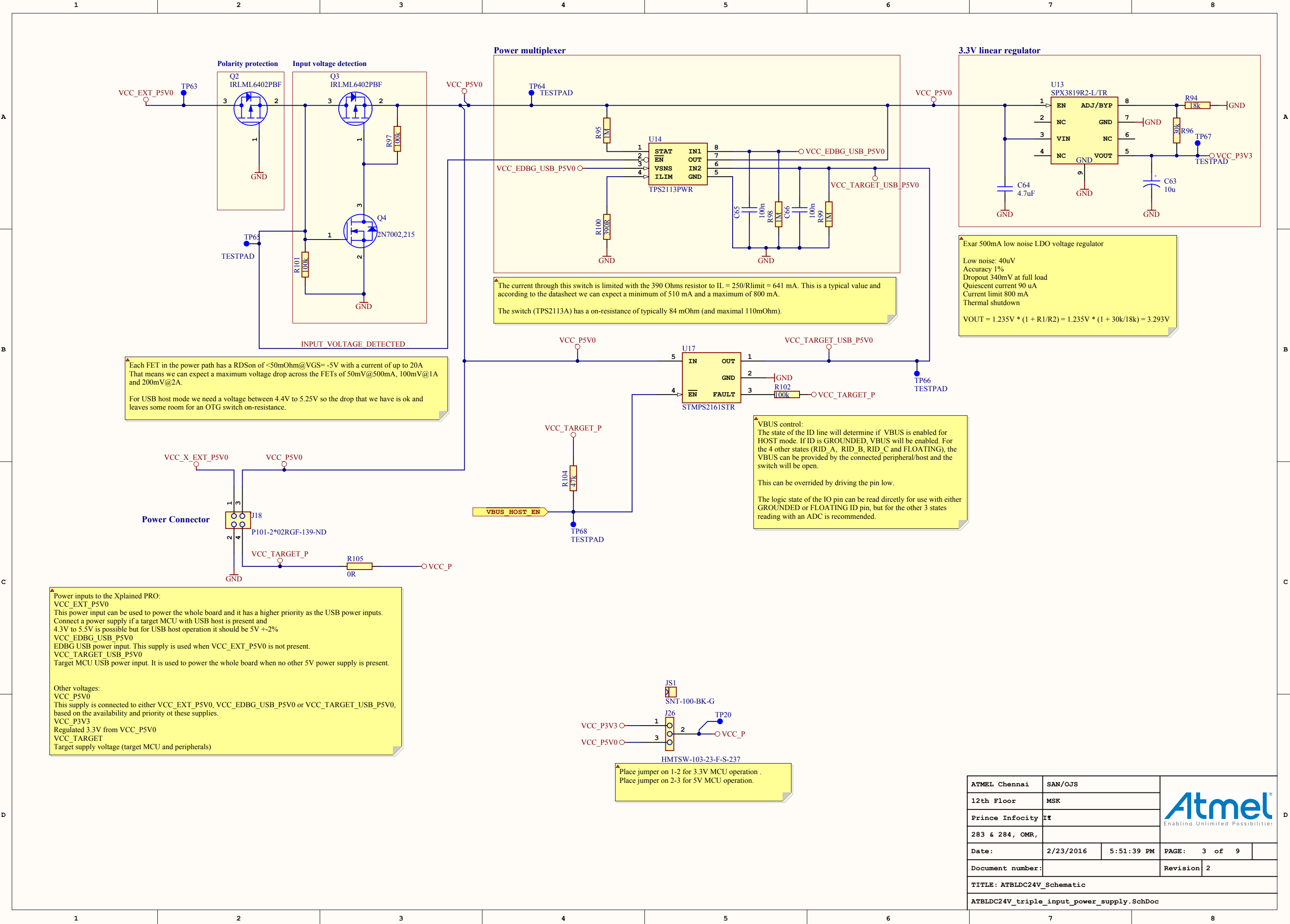
Product number/revision
Serial number

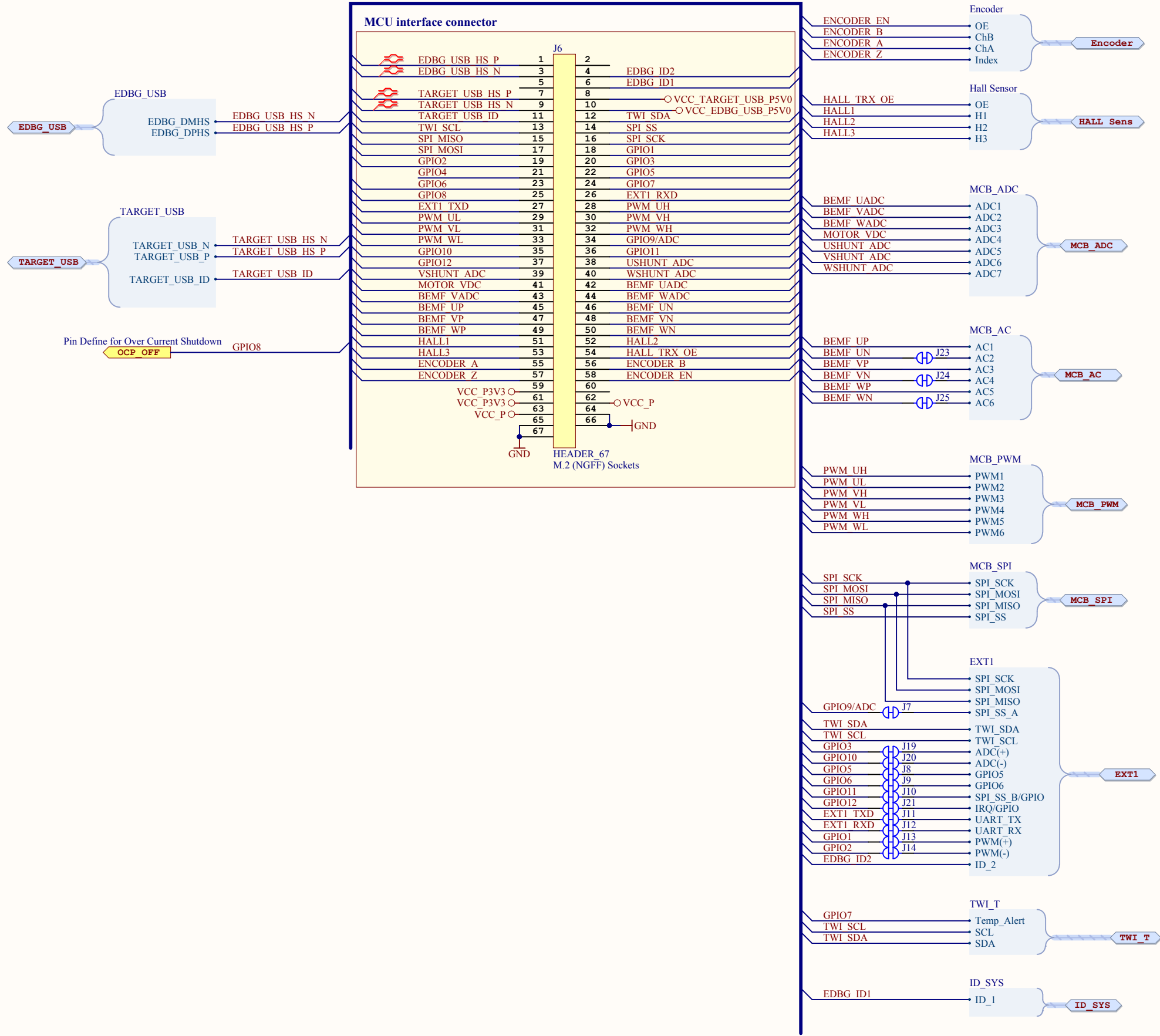
PCBA Label


PCB1

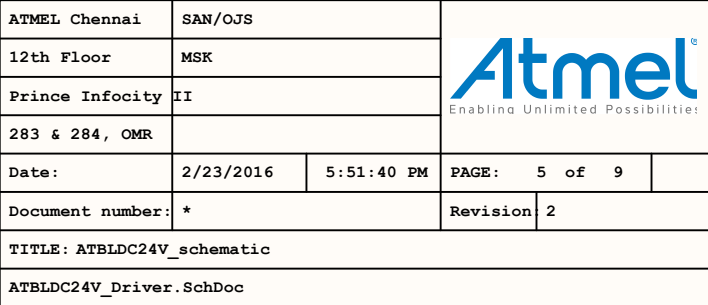
A08-2306
24V BLDC Motor Driver PCB

ATMEL Chennai		SAN/OJS		 Enabling Unlimited Possibilities	
12th Floor		MSK			
Prince Infocity		II			
283 & 284, OMR					
Date:	2/23/2016	5:51:39 PM	PAGE:	1 of 9	
Document number:	*		Revision	2	
TITLE: ATBLDC24V					
ATBLDC24V_TopLevel.SchDoc					

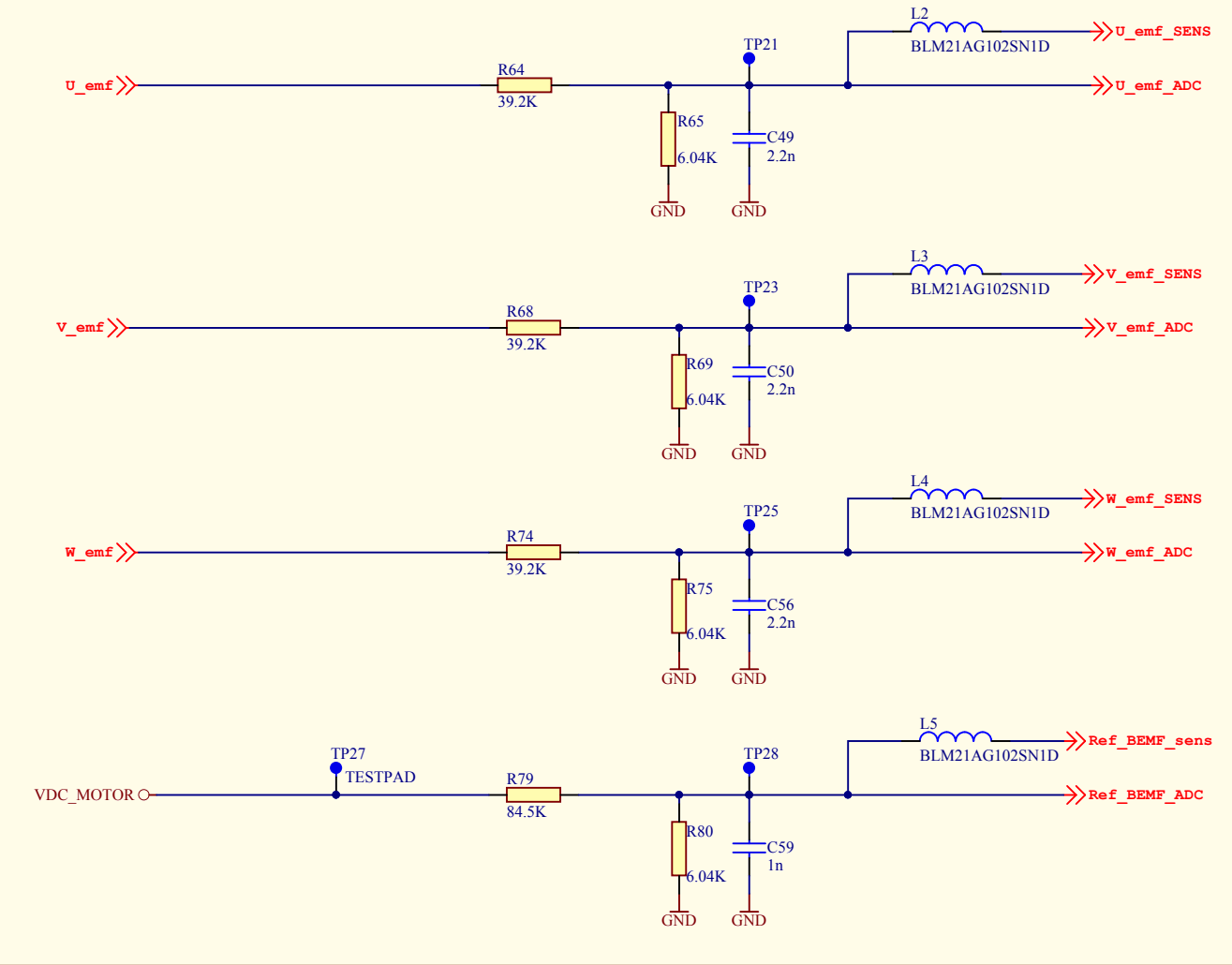




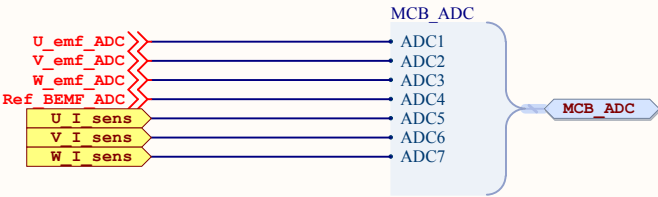
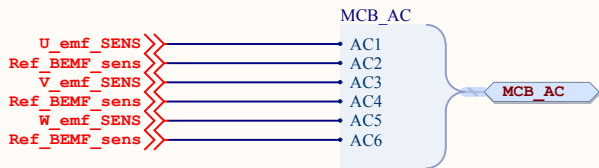
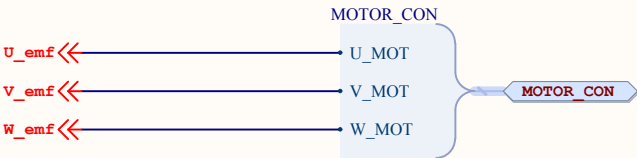
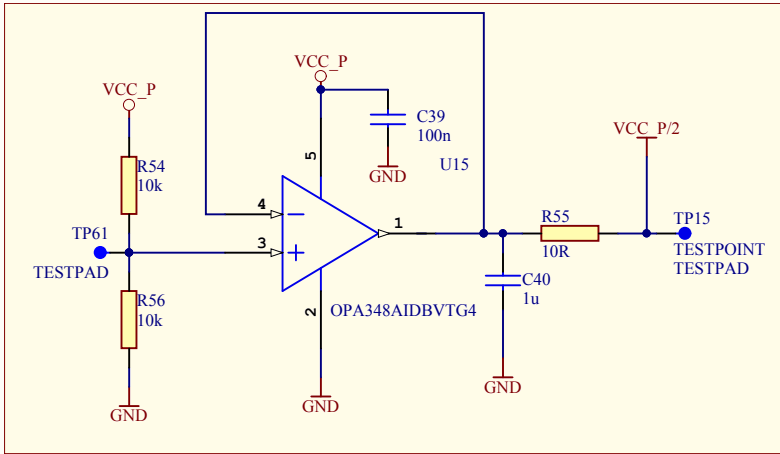
ATMEL Chennai		SAN/OJS		 Enabling Unlimited Possibilities	
12th Floor		MSK			
Prince Infocity II					
283 & 284, OMR,					
Date:	2/23/2016	5:51:39 PM	PAGE:	4 of 9	
Document number:	*			Revision:	2
TITLE: ATBLDC24V_schematic					
ATBLDC24V_MCU.SchDoc					




Motor BEMF sensor circuit

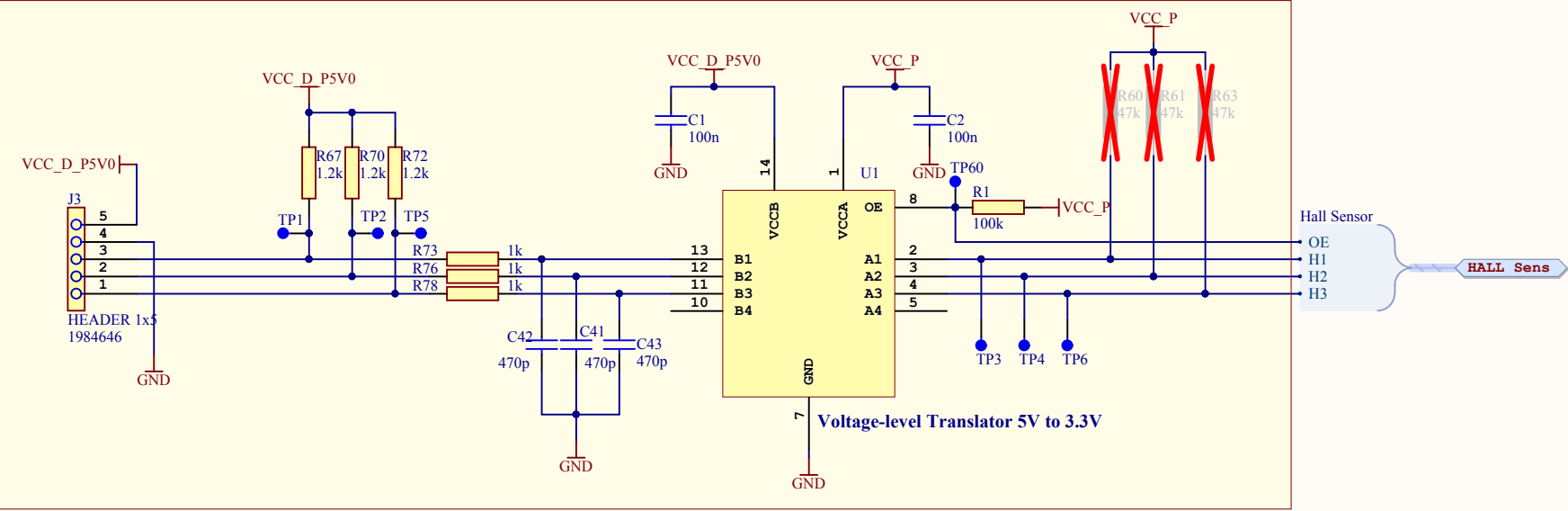


1.65V Reference Voltage

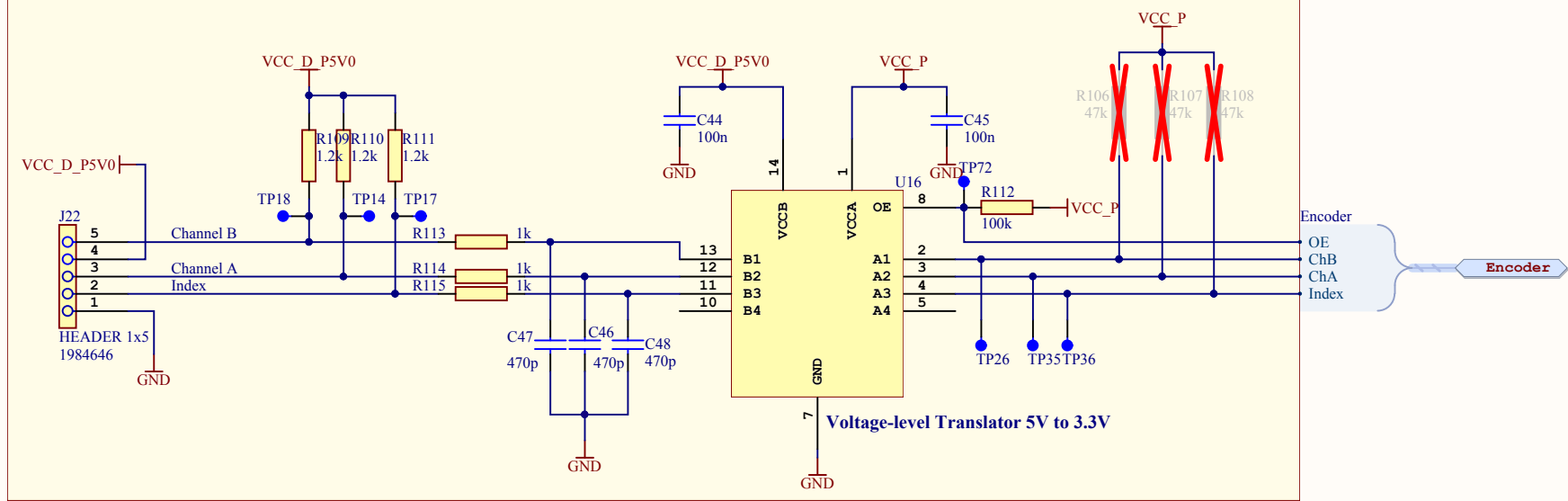


ATMEL Chennai		SAN/OJS		 Enabling Unlimited Possibilities!	
12th Floor		MSK			
Prince Infocity		II			
283 & 284, OMR					
Date:	2/23/2016	5:51:40 PM	PAGE:	6 of 9	
Document number:	*			Revision:	2
TITLE: ATBLDC24V_schematic					
ATBLDC24V_Bemf_Sensor.SchDoc					

Hall sensor header



Encoder header



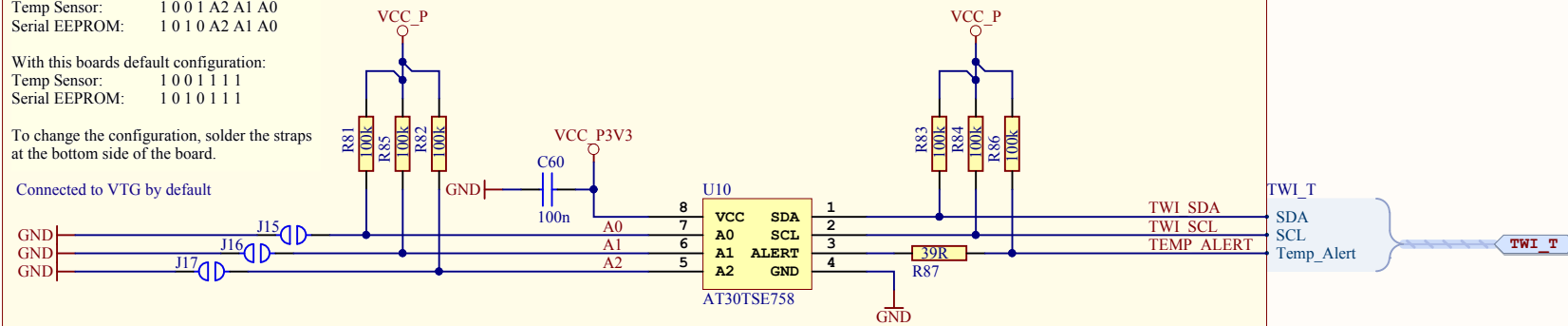
Temp sensor

The I2C adress for the device is:
Temp Sensor: 1 0 0 1 A2 A1 A0
Serial EEPROM: 1 0 1 0 A2 A1 A0

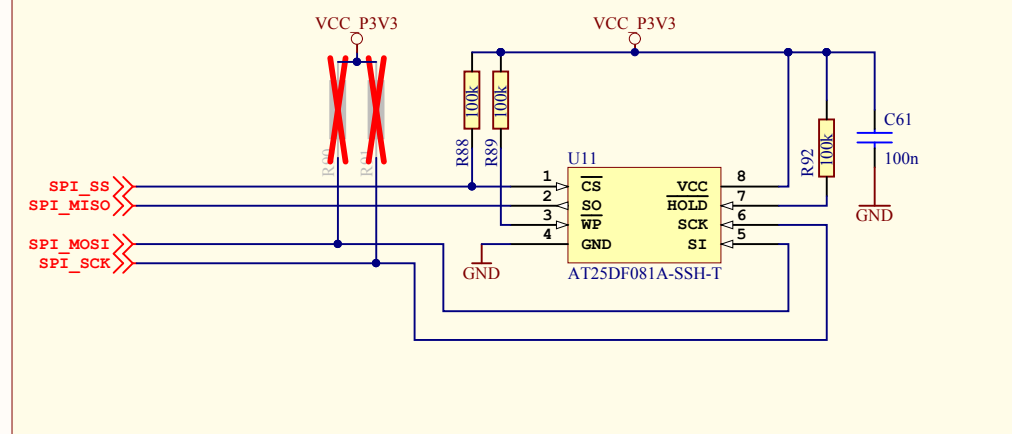
With this boards default configuration:
Temp Sensor: 1 0 0 1 1 1 1
Serial EEPROM: 1 0 1 0 1 1 1

To change the configuration, solder the straps
at the bottom side of the board.

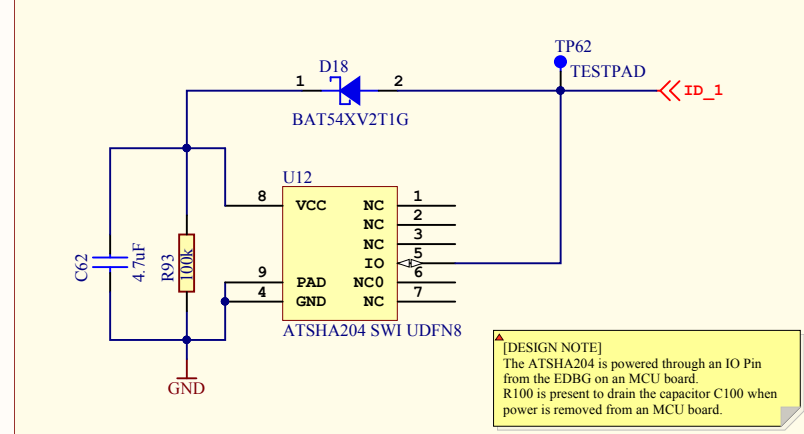
Connected to VTG by default



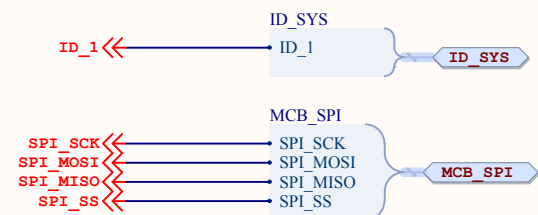
Serial Flash




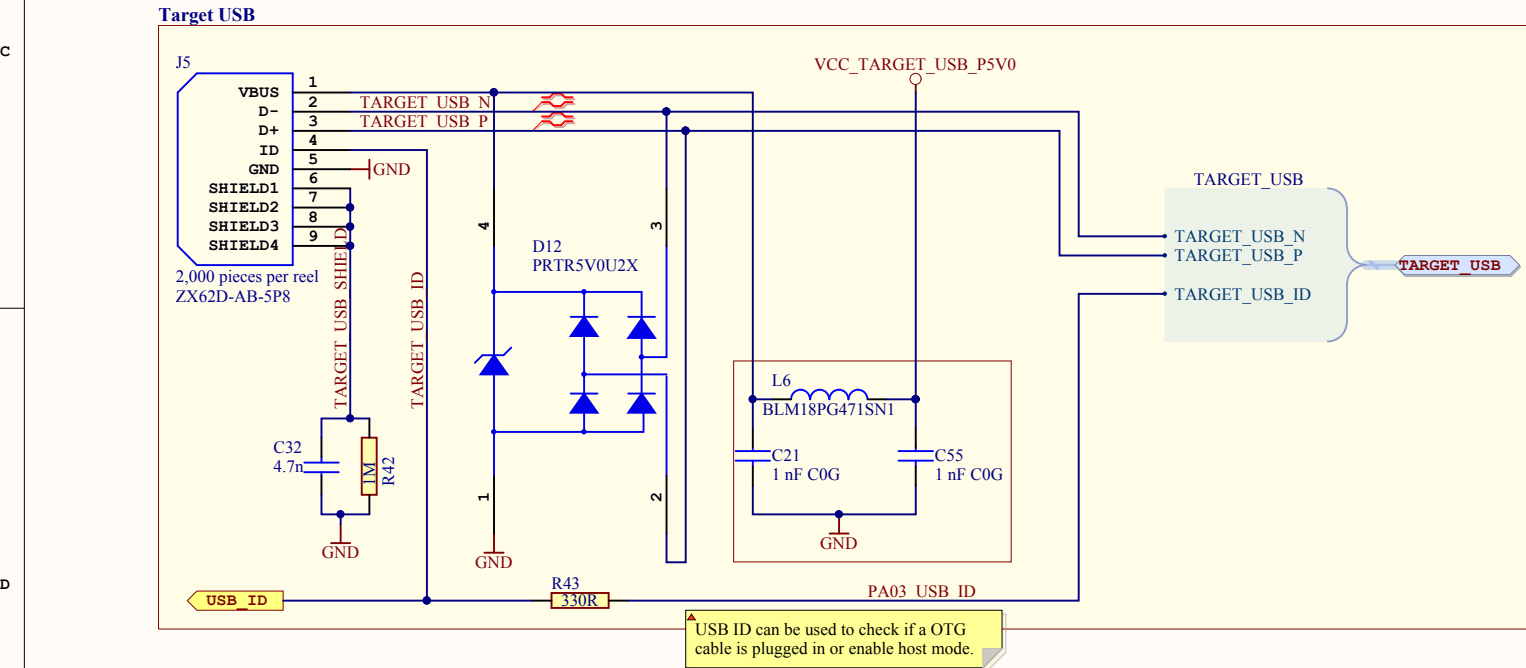
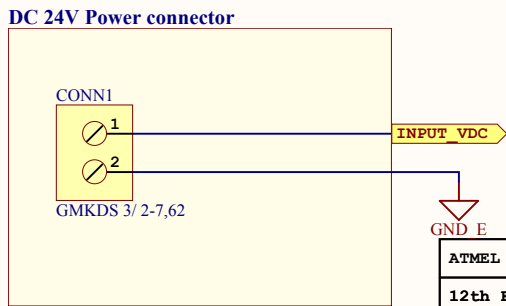
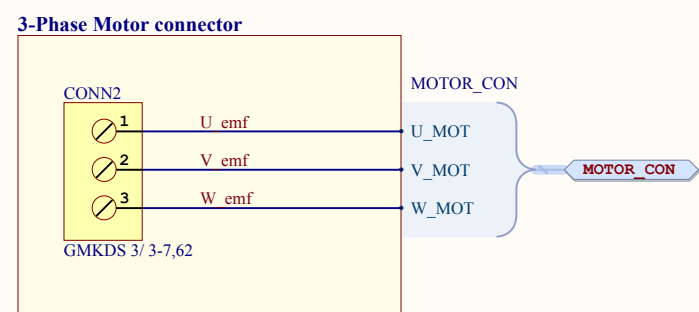
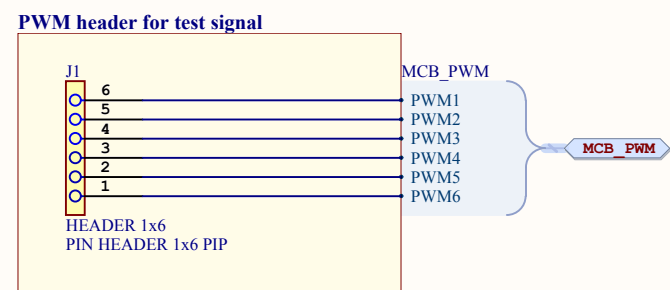
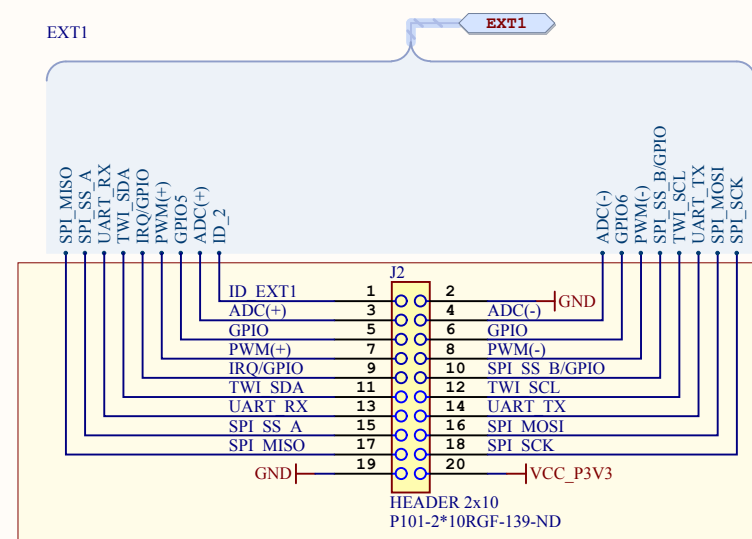
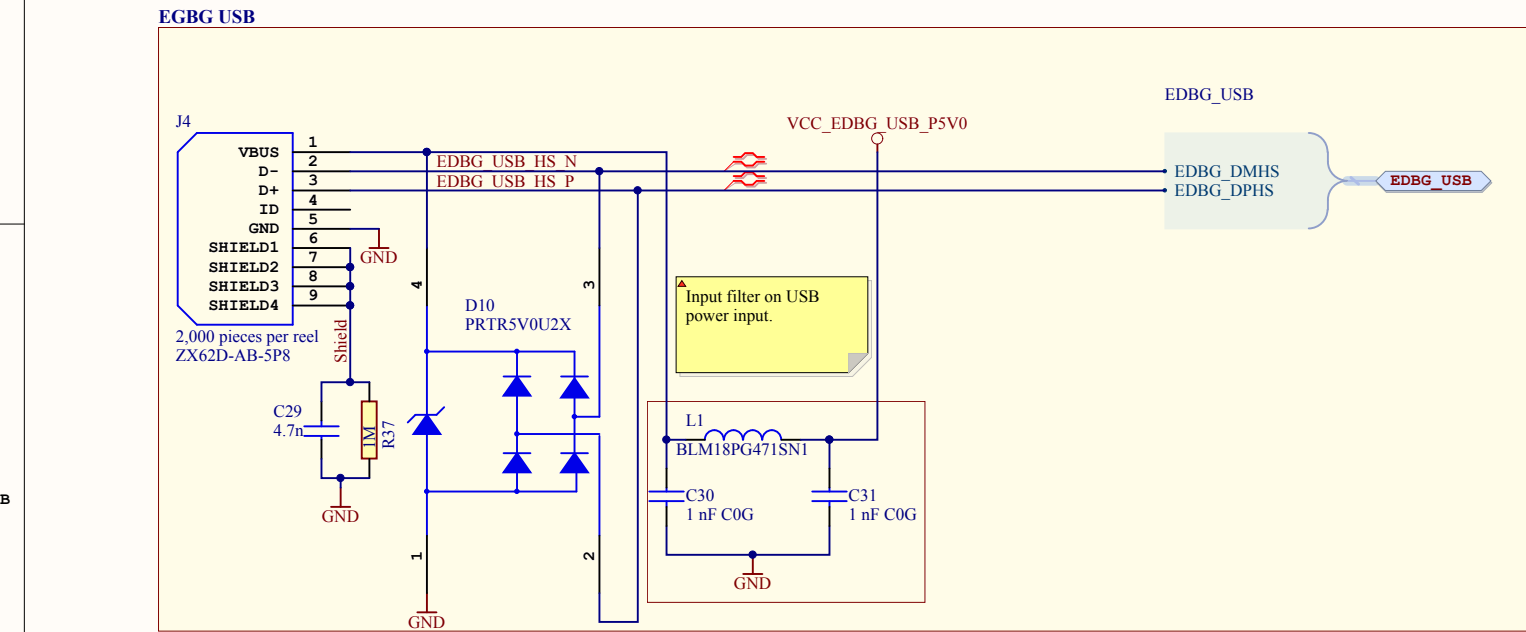
Extension Identification

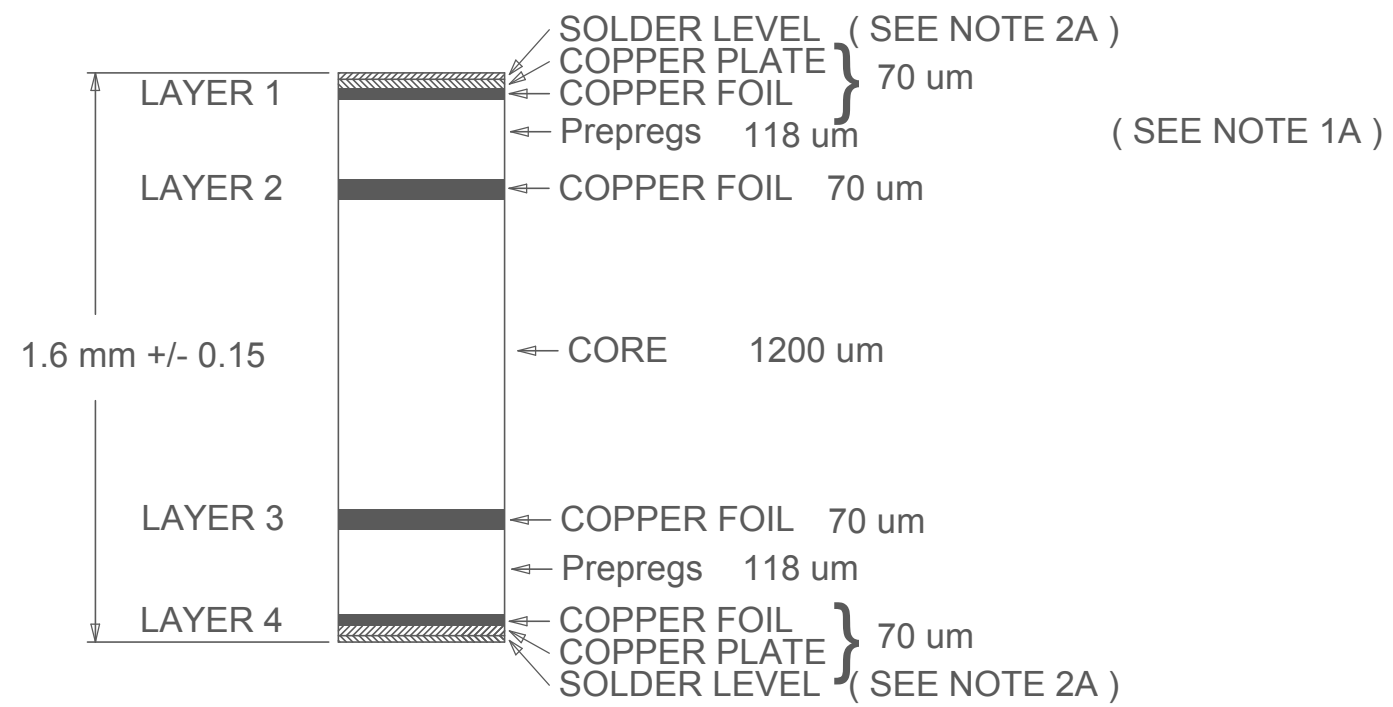


[DESIGN NOTE]
The ATSHA204 is powered through an IO Pin
from the EDBG on an MCU board.
R100 is present to drain the capacitor C100 when
power is removed from an MCU board.



ATMEL Chennai	SAN/OJS			
12th Floor	MSK			
Prince Infocity II				
283 & 284 OMR				
Date:	2/23/2016	5:51:40 PM	PAGE: 8 of 9	
Document number:	*	Revision	2	
TITLE: ATBLDC24V_schematic				
ATBLDC24V_Flash_Temp.SchDoc				





NOTE 1A: DIELECTRIC FR4
2A: SURFACE PROTECTION: Chemical Gold

THE BOARD MUST BE RoHS COMPLIANT

DETAIL A (CROSS-SECTION)

SCALE = NONE

